

Madison Floor Plan

In The Village at Hobson Square from **\$694,900**

PLAN DETAILS

Pricing from **\$694,900**

4 Beds 2.5 Baths 2,392 Sq Ft

2 Story 2 Car Garage



Traditional Elevation

Welcome to the Madison, a charming and inviting home that's become one of our most popular floorplans. You'll feel right at home as soon as you step into its modern open-concept main living area. The seamless flow between the Dining Room, Kitchen with Nook, and Great Room creates a warm and welcoming atmosphere. The bright and sunny study with French doors and wall of windows is a perfect place to work or learn from home. The welcoming Foyer, convenient Powder Room, and practical Mudroom near the 2-car garage are just some of the lovely touches that make the Madison special. Upstairs, the Owners' Suite features a spacious Walk-In Closet and private ensuite Bath. And with three additional Bedrooms, a full Bath, and a first-floor Laundry Room, there's plenty of space for everyone!Some images ... Read More at tuskeshomes.com

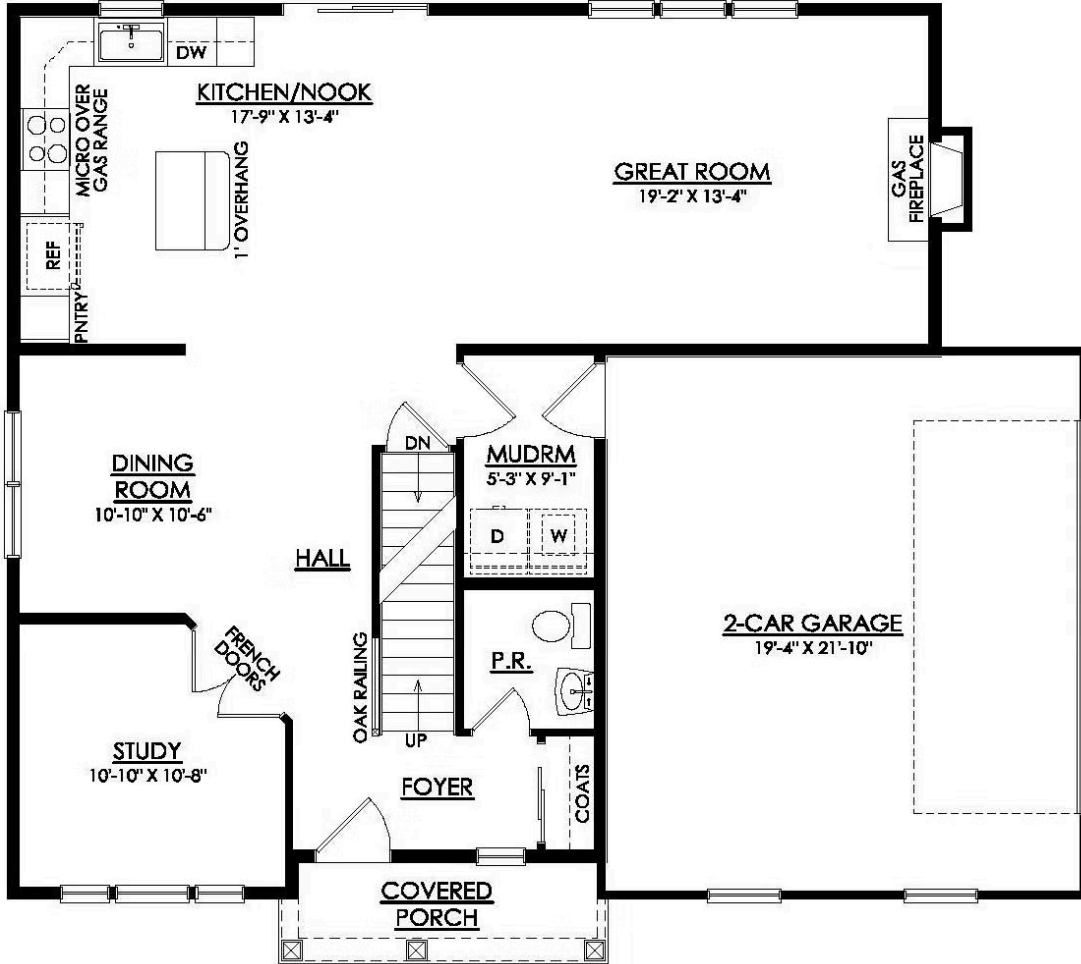
Madison Floor Plan

In The Village at Hobson Square from \$694,900



Madison Floor Plan

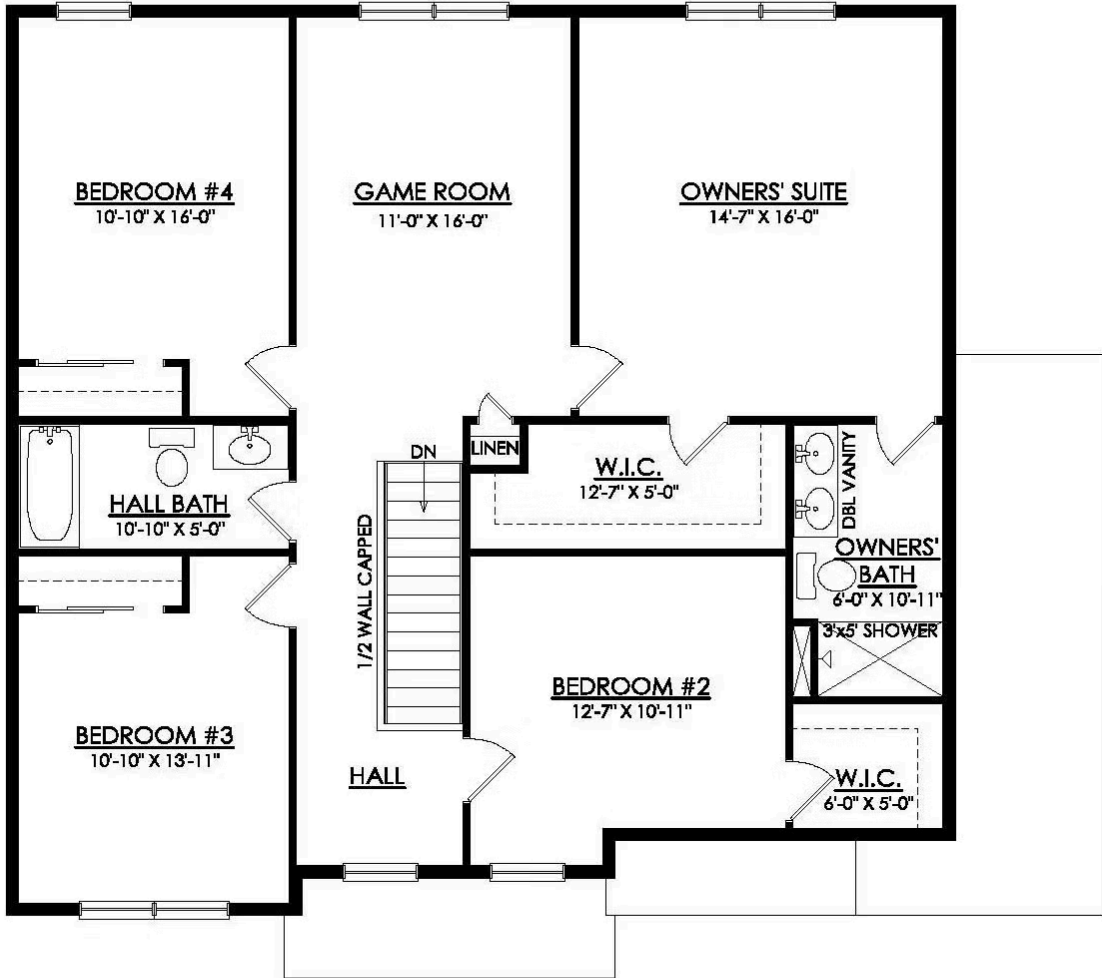
In The Village at Hobson Square from \$694,900



MADISON TRADITIONAL 1ST FLOOR PLAN PREMIER

Madison Floor Plan

In The Village at Hobson Square from \$694,900



MADISON TRADITIONAL 2ND FLOOR PLAN PREMIER



Madison Floor Plan

In The Village at Hobson Square from **\$694,900**



Madison Floor Plan

In The Village at Hobson Square from **\$694,900**



Madison Floor Plan

In The Village at Hobson Square from **\$694,900**



Madison Floor Plan

In The Village at Hobson Square from **\$694,900**



Madison Floor Plan

In The Village at Hobson Square from **\$694,900**



Madison Floor Plan

In The Village at Hobson Square from **\$694,900**