

Rockford Floor Plan

In The Village at Hobson Square from **\$714,900**

PLAN DETAILS

Pricing from **\$714,900**

3 Beds 2.0 Baths 2,162 Sq Ft

1 Story 2 Car Garage



Rockford Cottage- Front-Entry

Introducing the Rockford, an inviting Ranch home designed for both comfort and style and offers a thoughtful layout that maximizes space and functionality. At the heart of the home, the open-concept design of the Great Room and Kitchen creates a welcoming atmosphere. With a grand cathedral ceiling, a wall of windows, and an optional Morning Room, there is a sense of openness so that no matter how many people visit, you will never feel cramped. The Owners' Suite tucked away in the back of the home includes two spacious Walk-In Closets, as well as its own ensuite bathroom for added privacy. The Rockford also features two additional Bedrooms that offer flexibility for guests, a home office, or other uses to suit your needs. With thoughtfully designed spaces and a layout that promote ... Read More at tuskeshomes.com

PLAN FEATURES

3 Bedrooms

2 Baths

2-Car Garage

Starting at 2,124 Square Feet

Open Concept Great Room and Kitchen

Rockford Floor Plan

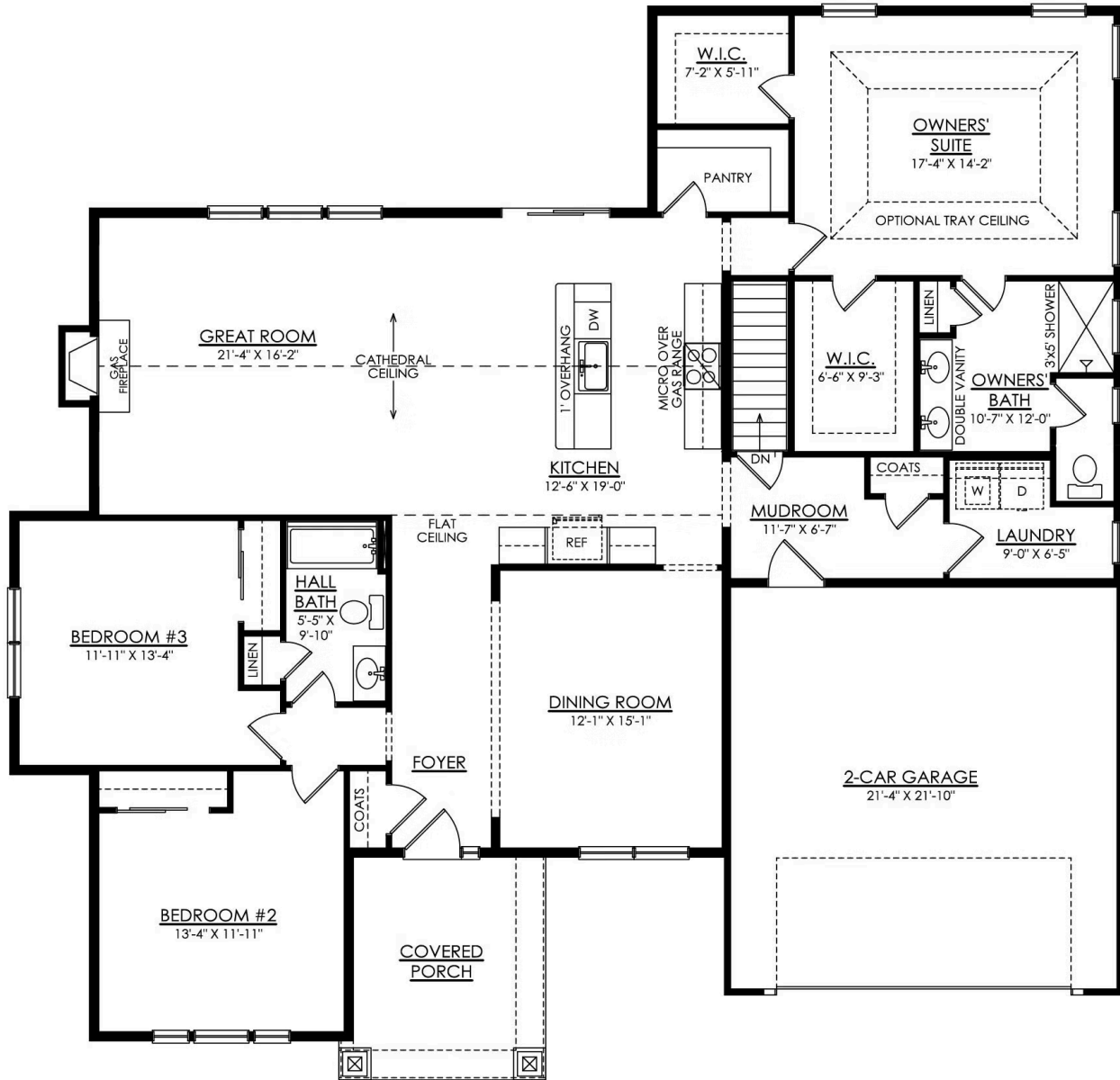
In The Village at Hobson Square from \$714,900



Rockford Craftsman- Front-Entry

Rockford Floor Plan

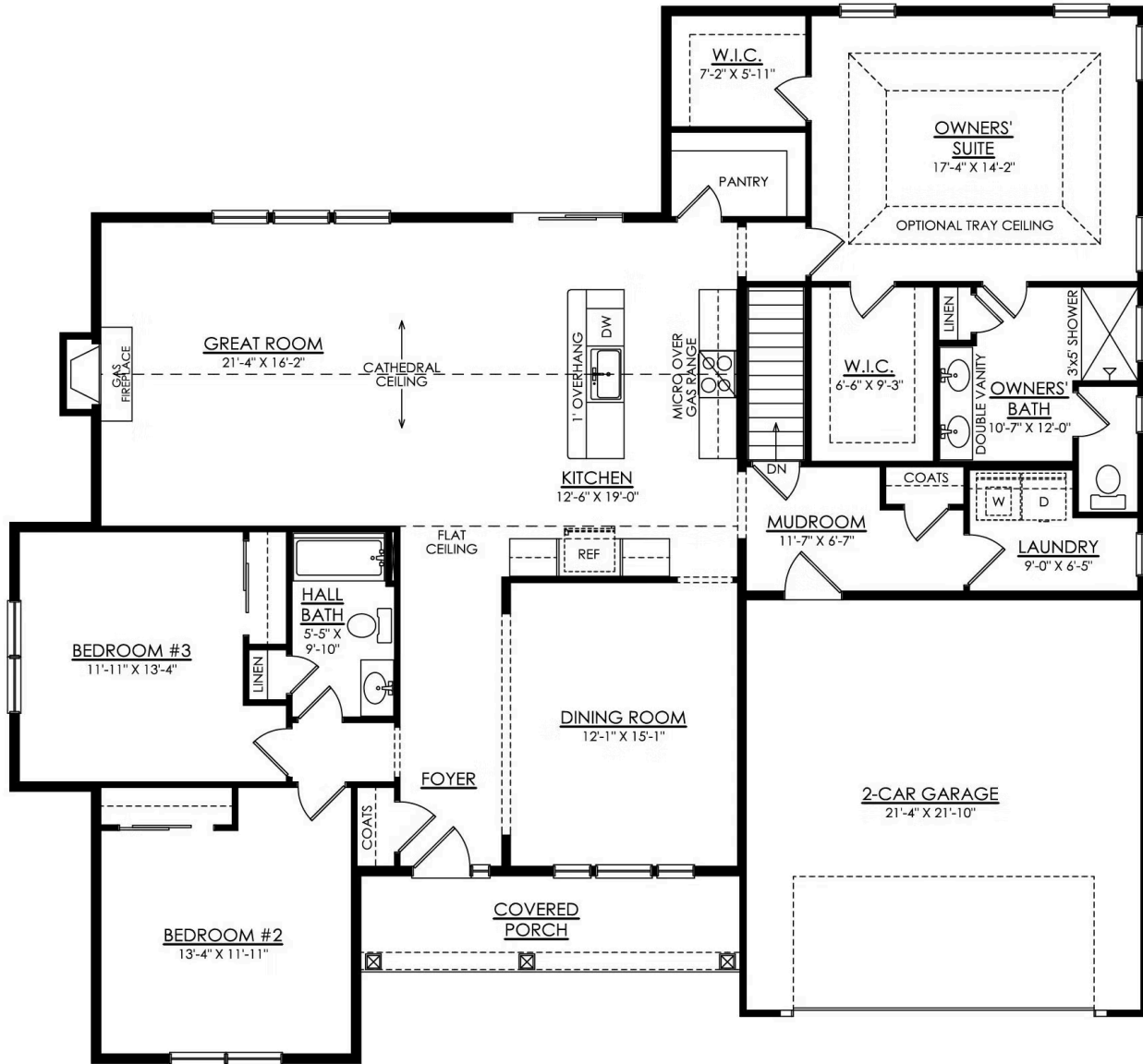
In The Village at Hobson Square from \$714,900



ROCKFORD CRAFTSMAN 1ST FLOOR PLAN PREMIER

Rockford Floor Plan

In The Village at Hobson Square from \$714,900



ROCKFORD COTTAGE 1ST FLOOR PLAN PREMIER



Rockford Floor Plan

In The Village at Hobson Square from **\$714,900**