

Willow Floor Plan

In The Village at Hobson Square from **\$719,900**

PLAN DETAILS

Pricing from **\$719,900**

 4 Beds  2.5 Baths  2,424 Sq Ft

 2 Car Garage



Craftsman Elevation

Welcome to the Willow, a beautiful new single-family home thoughtfully designed for modern living with a timeless style. Through the Foyer, you'll find a dedicated Dining Room perfect for both everyday meals and special celebrations and holidays with friends and family. Spend time in the well-lit Study with a French Door either working or using it as a special playroom. The spacious open-concept Great Room and Kitchen, however, is the true heart of the home and the perfect place to enjoy your day. Gather around the cozy Great Room Fireplace and take in the delicious smells of homecooked meals coming from the Kitchen, complete with a pantry and island with an overhang for casual eating. The second floor is full of convenience, complete with three Bedrooms, a Laundry room, a Hall Bath, and the ... Read More at tuskeshomes.com

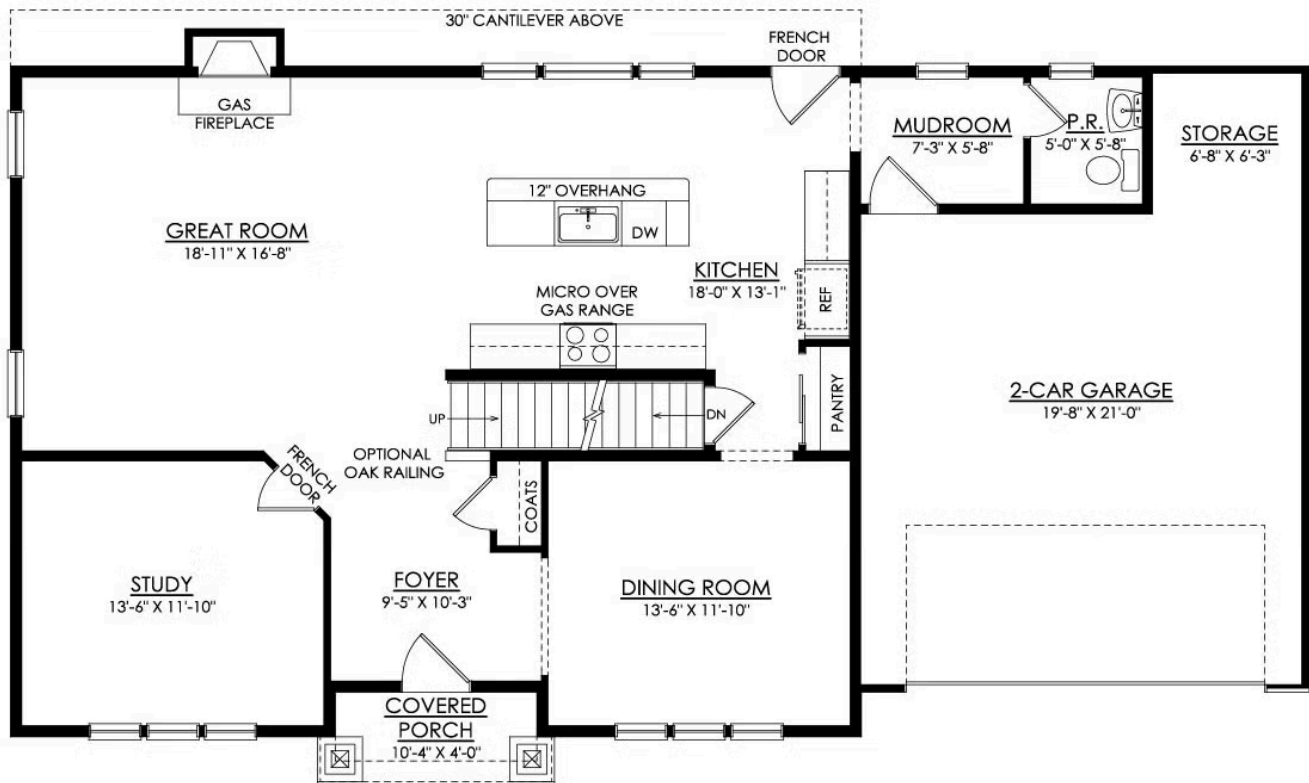
Willow Floor Plan

In The Village at Hobson Square from **\$719,900**



Willow Floor Plan

In The Village at Hobson Square from \$719,900



WILLOW CRAFTSMAN 1ST FLOOR PLAN PREMIER

Willow Floor Plan

In The Village at Hobson Square from \$719,900



WILLOW CRAFTSMAN 2ND FLOOR PLAN PREMIER



Willow Floor Plan

In The Village at Hobson Square from **\$719,900**



Willow Floor Plan

In The Village at Hobson Square from **\$719,900**



Willow Floor Plan

In The Village at Hobson Square from **\$719,900**



Willow Floor Plan

In The Village at Hobson Square from **\$719,900**



Willow Floor Plan

In The Village at Hobson Square from **\$719,900**