

# Willow

Available in 1 Community

## PLAN DETAILS

4 Beds 2.5 Baths 2,424 Sq Ft

2 Car Garage



Craftsman Elevation

Welcome to the Willow, a beautiful new single-family home thoughtfully designed for modern living with a timeless style. Through the Foyer, you'll find a dedicated Dining Room perfect for both everyday meals and special celebrations and holidays with friends and family. Spend time in the well-lit Study with a French Door either working or using it as a special playroom. The spacious open-concept Great Room and Kitchen, however, is the true heart of the home and the perfect place to enjoy your day. Gather around the cozy Great Room Fireplace and take in the delicious smells of homecooked meals coming from the Kitchen, complete with a pantry and island with an overhang for casual eating. The second floor is full of convenience, complete with three Bedrooms, a Laundry room, a Hall Bath, and the ... Read More at [tuskeshomes.com](http://tuskeshomes.com)

## PLAN FEATURES

- 4 Bedrooms
- 2.5 Bathrooms
- 2-Car Garage with Storage Space
- Starting at 2,424 Square Feet
- Large Great Room
- Open Kitchen with Pantry
- Mudroom and Powder Room
- Private Study with French Door
- Dedicated Dining Room
- Spacious Owners' Suite with 2 Large Walk-In Closets and Private Bath including Double Vanity and Linen Closet
- 2nd Floor Laundry Room
- Optional 2nd Floor Bonus Room with Sloped Ceiling, Sitting Area, and Closet

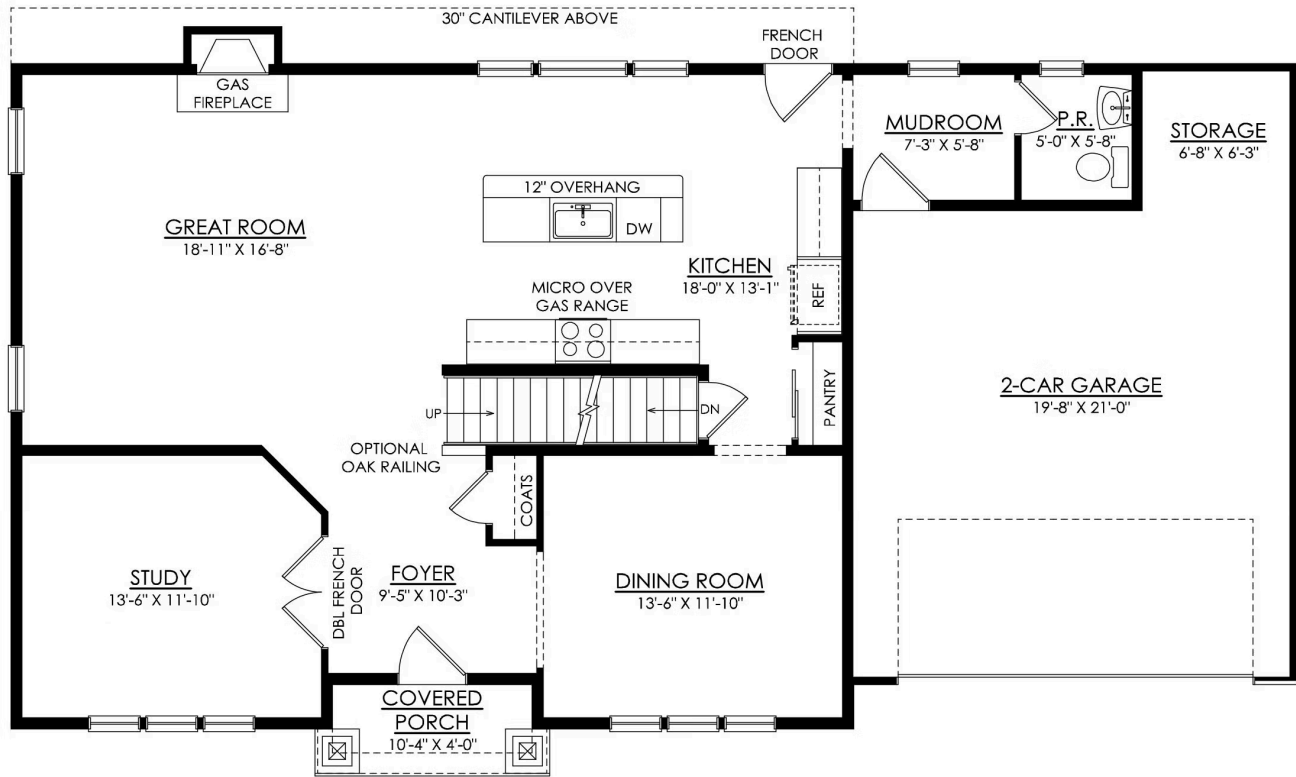
# Willow

Available in 1 Community



# Willow

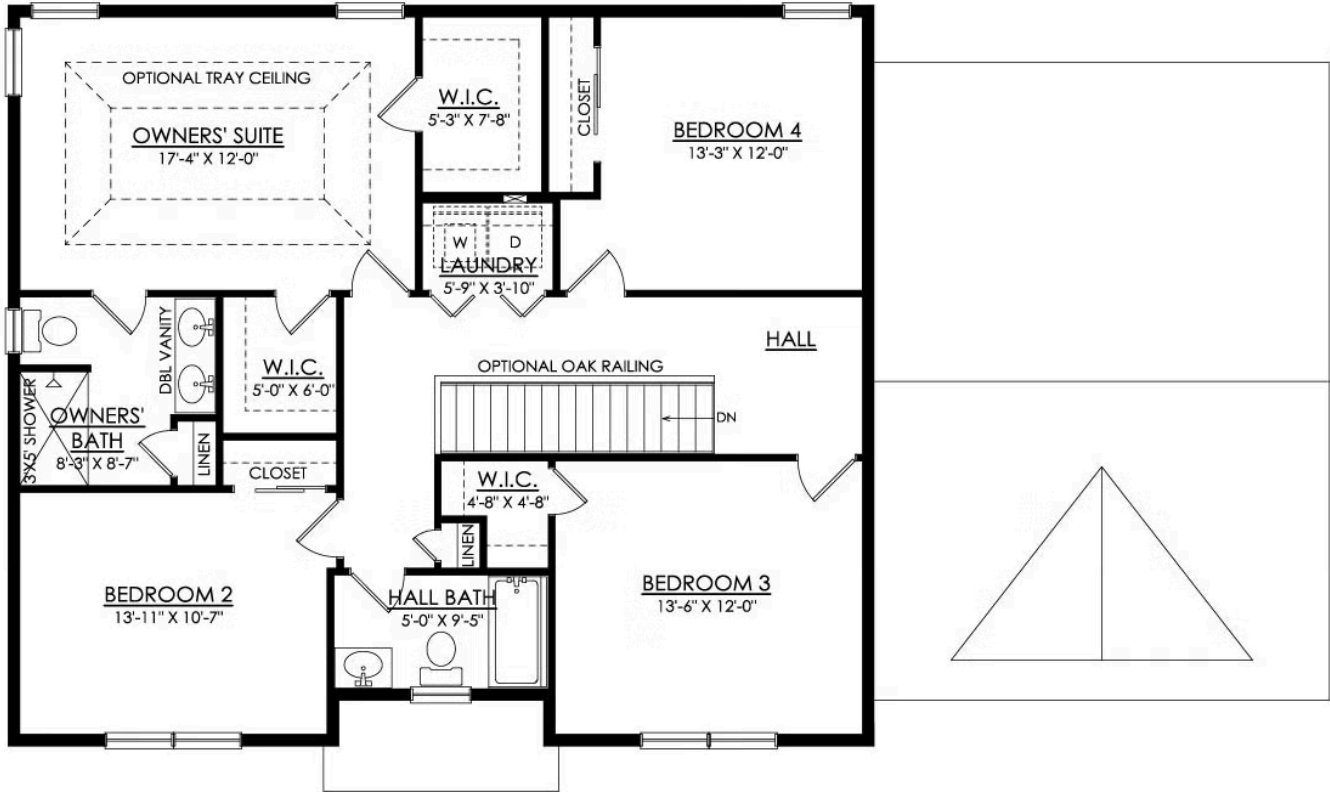
Available in 1 Community



## WILLOW CRAFTSMAN 1ST FLOOR PLAN PREMIER

# Willow

Available in 1 Community



## WILLOW CRAFTSMAN 2ND FLOOR PLAN PREMIER



# Willow

Available in 1 Community



# Willow

Available in 1 Community



# Willow

Available in 1 Community



# Willow

Available in 1 Community



# Willow

Available in 1 Community